



by **HpH**

SharkCup

SELFBRIEFING

LKZB – Zbraslavice



AIRFIELD DETAILS

Elevation: 493m / 1617ft.

Runway (RWY): 150°/330° (780x150 m, grass)

Competition frequency (FREQ): 126,630 MHz

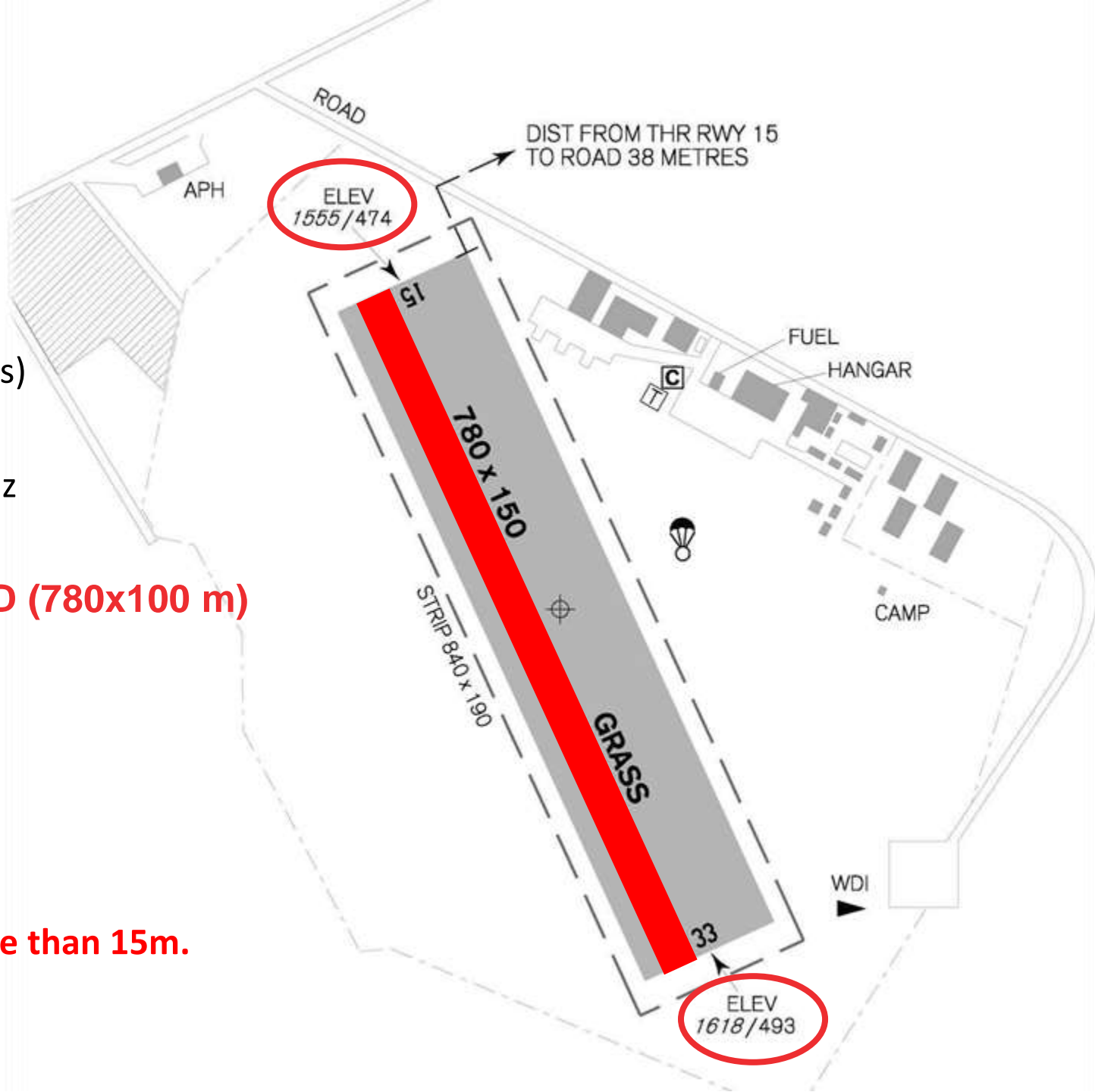
ATTENTION, THE RWY IS NARROWED (780x100 m)

GLD air traffic patterns:

RWY 15 – right

RWY 33 – left

The elevation difference of the RWY is more than 15m.



AIRSPACE

TRA GA airspaces

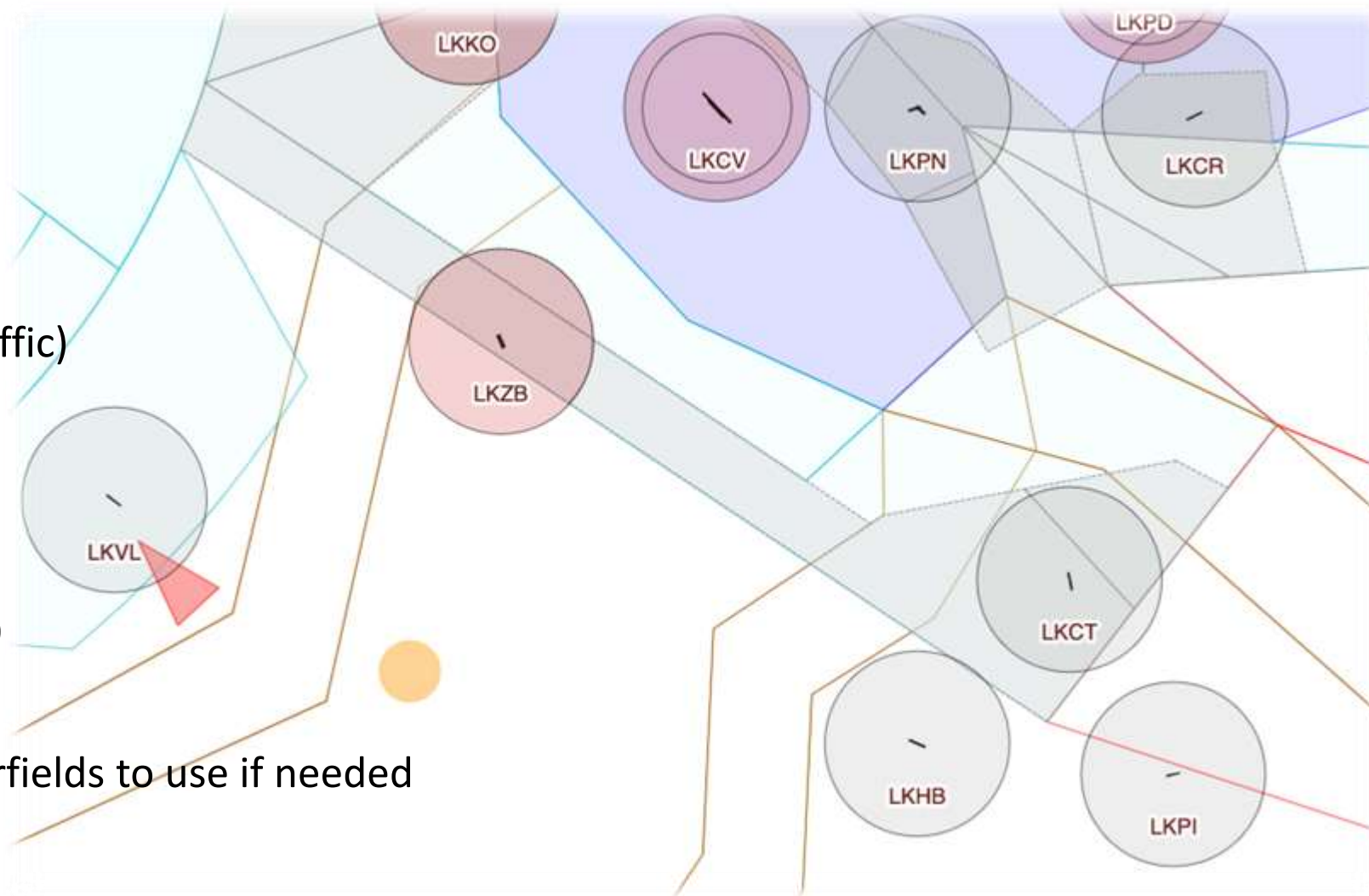
- under control of LKZB
(usually free for glider traffic)

TMA Prague

- closest TMA from FL75
(no significant restriction)

Reasonable number of airfields to use if needed

- LKVL, LKHB, LKPI



A stylized, light blue graphic of a person's arm and hand, rendered in a simple, abstract style. The arm is extended from the left side of the frame, with the hand open and fingers slightly spread. The graphic is semi-transparent and serves as a background element for the text.

The competition area will be defined before the start of the competition based on the current ICAO situation in CZE, DE, AT.

DAILY BRIEFINGS

Throughout the competition period, all important information (e.g. runway in use, airspace, etc.) will be communicated to competitors at the daily briefing, which will be held at 10:00 (unless otherwise announced) in the briefing room each day.

The official information channel during the competition is a group created on WhatsApp.

All important information regarding the day will also be published on the task sheet.

Time Schedule

- Entries due 16 August 2023
- Start list closure 17 August 2023
- Registration period 4 April to 17 August 2023 (Thu until 10:00)**
- Safety briefing 19 August 2023 19:00**
- Official opening and first briefing 20 August 2023 10:00**
- Contest flying period 20 August to 25 August 2023
- Alternate competition day 26 August 2023
- Prize giving 25 August 2023 ***
- Field concert at LKPN 26 August 2023
- **Exact times could be changed. If so, it will be specified on the competition website.
- *** In case the reserve day will be applied, Prize giving ceremony to be postponed to 26.8.2023

SWIMMING POOL

GATEWAY

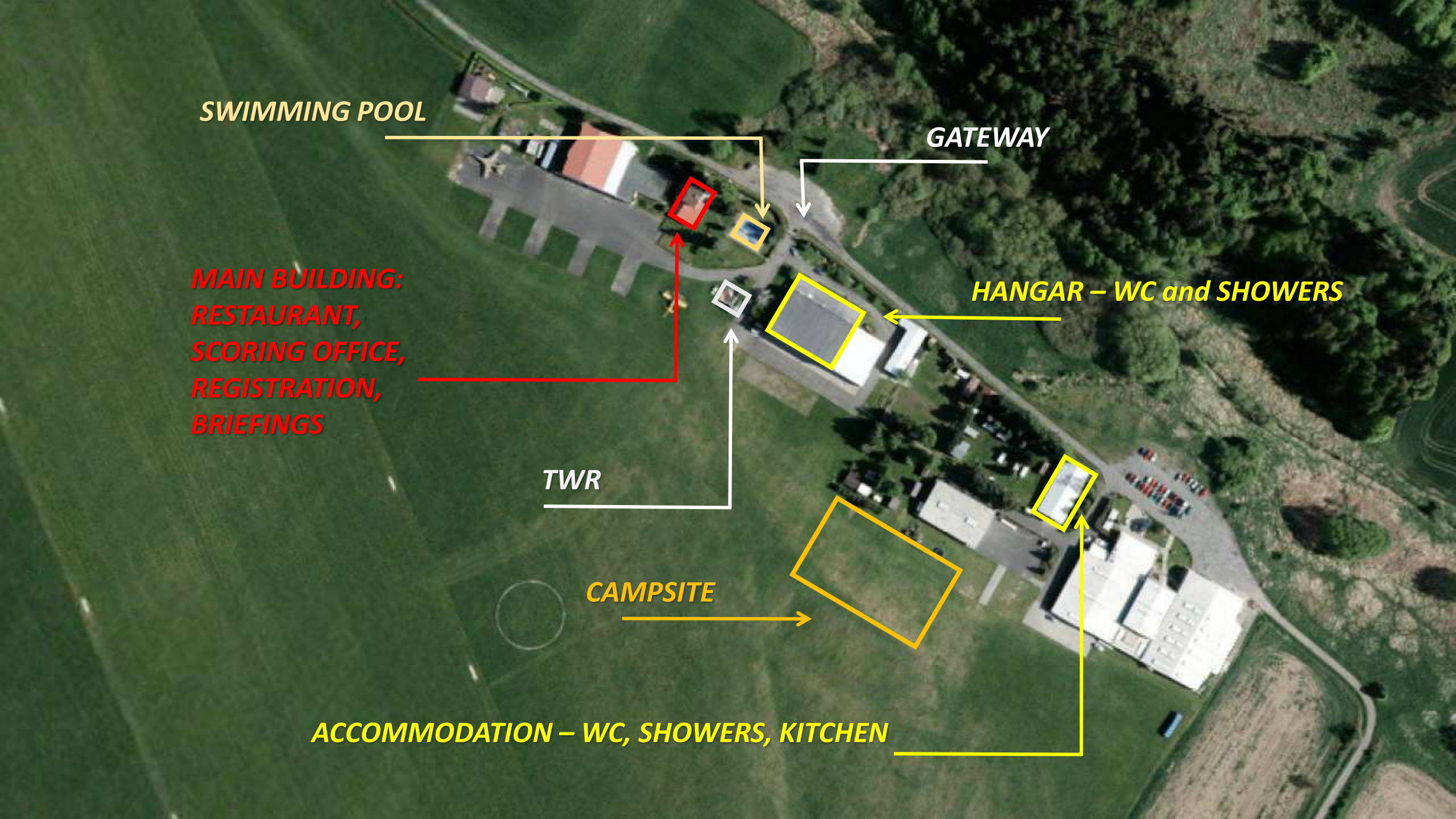
**MAIN BUILDING:
RESTAURANT,
SCORING OFFICE,
REGISTRATION,
BRIEFINGS**

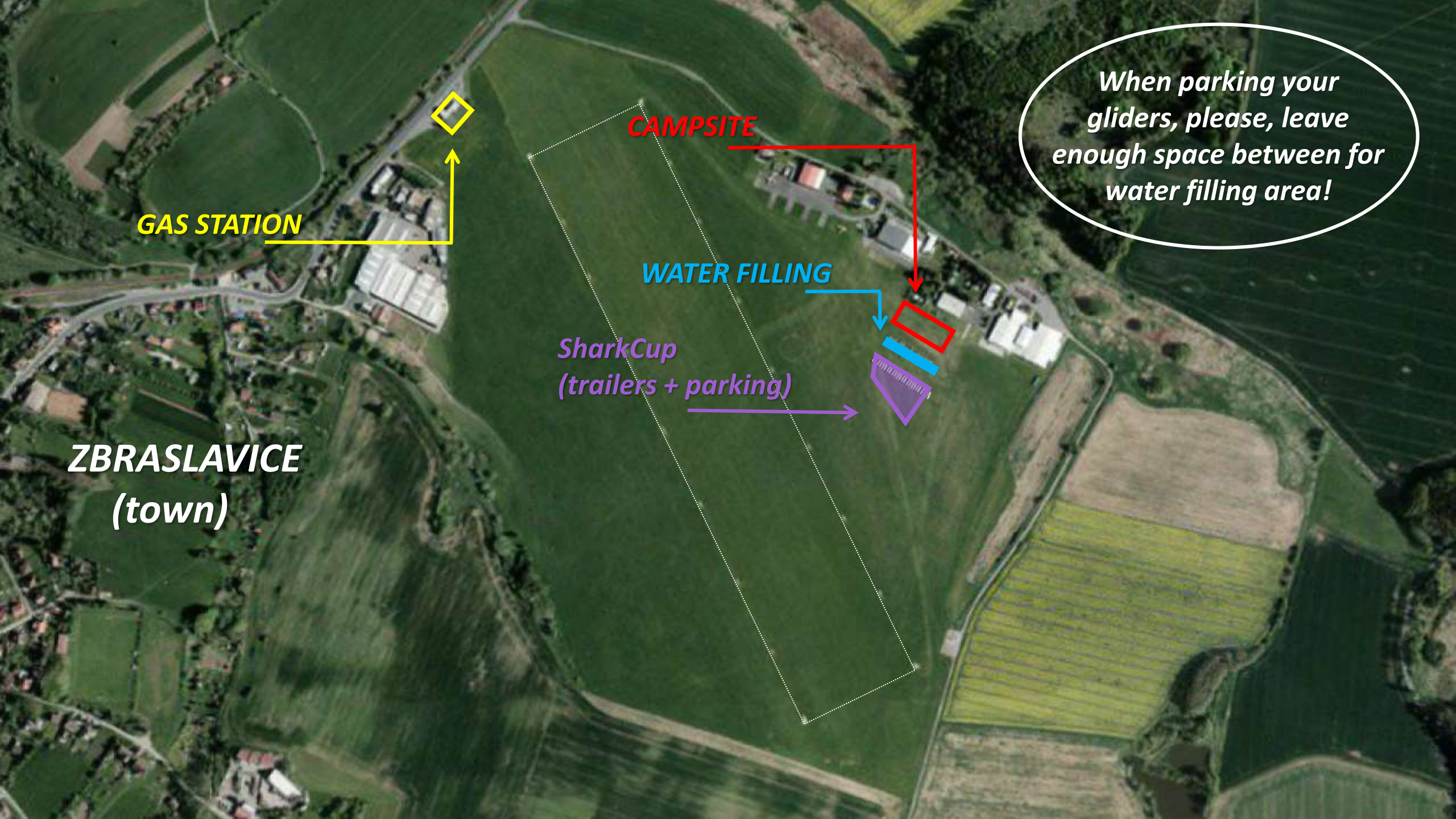
HANGAR – WC and SHOWERS

TWR

CAMPSITE

ACCOMMODATION – WC, SHOWERS, KITCHEN





When parking your gliders, please, leave enough space between for water filling area!

CAMPSITE

GAS STATION

WATER FILLING

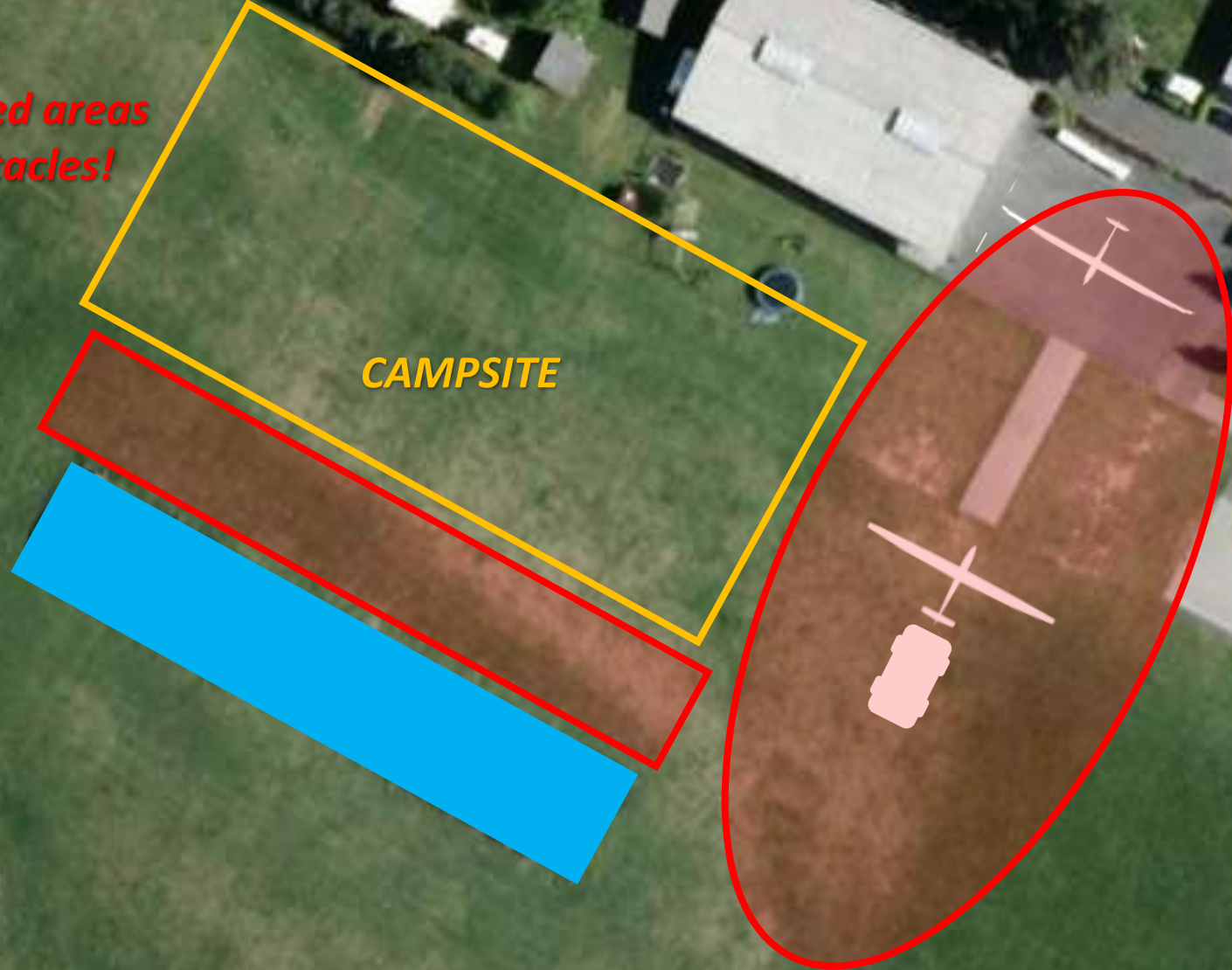
*SharkCup
(trailers + parking)*

**ZBRASLAVICE
(town)**

*Please, leave those red areas
free without any obstacles!*

*SharkCup TRAILERS
+ water filling area*

CAMPSITE





-  safety zone
-  do not park zone
-  crossing of the strip
-  landing area during takeoffs
-  campsite

kotveni kambi

 kotveni kambi

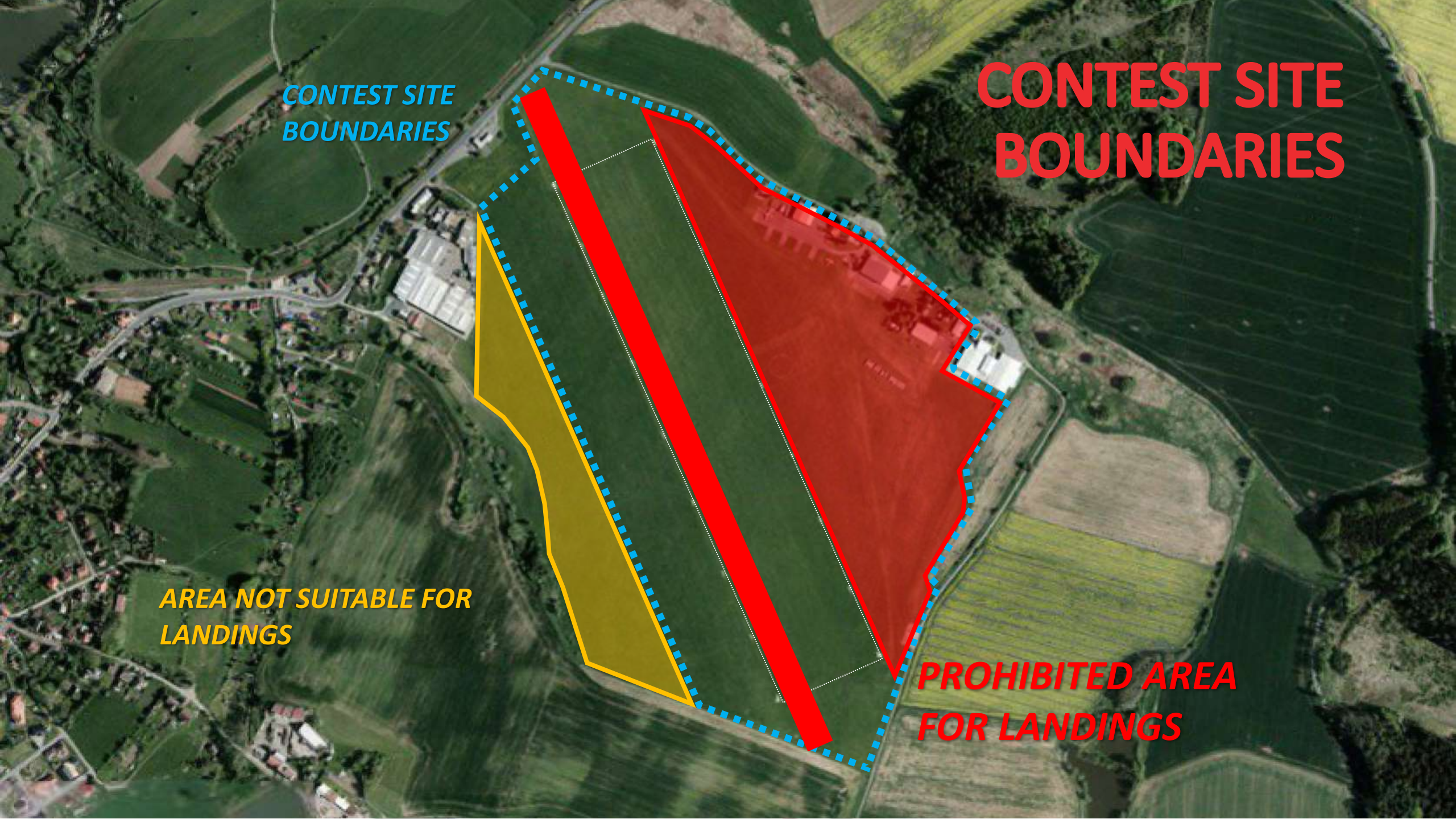
kotveni klub

*CONTEST SITE
BOUNDARIES*

**CONTEST SITE
BOUNDARIES**

*AREA NOT SUITABLE FOR
LANDINGS*

**PROHIBITED AREA
FOR LANDINGS**

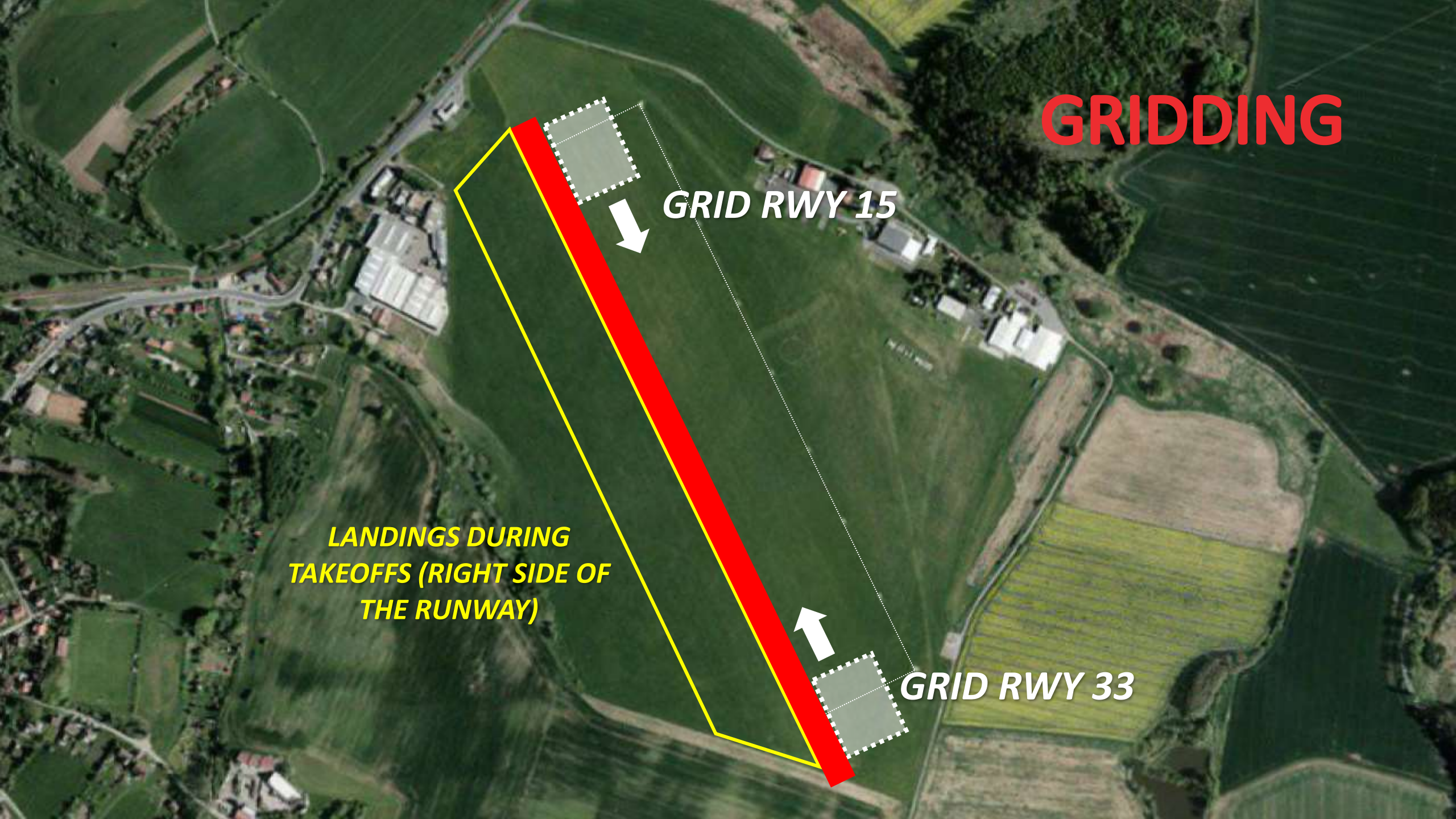


GRIDDING

GRID RWY 15

GRID RWY 33

*LANDINGS DURING
TAKEOFFS (RIGHT SIDE OF
THE RUNWAY)*

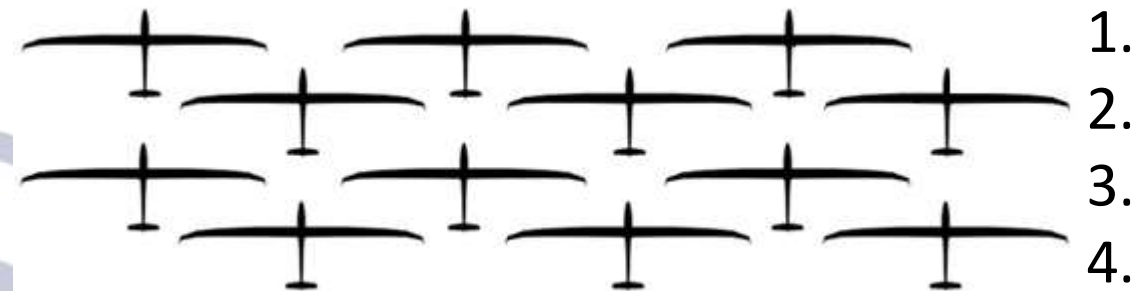


GRIDDING

FREE GRID ORDER during competition period
(if not decided differently during the safety briefing).

Cars must be removed from the grid 15 mins before
the first take off!

Final grid pattern will be decided
according to total number of gliders
in Shark Cup



GRIDDING

The grid will be set as during a competition, from the back to the front (first gliders in the grid queue go to the back)



TAKEOFF PROCEDURE RWY 15

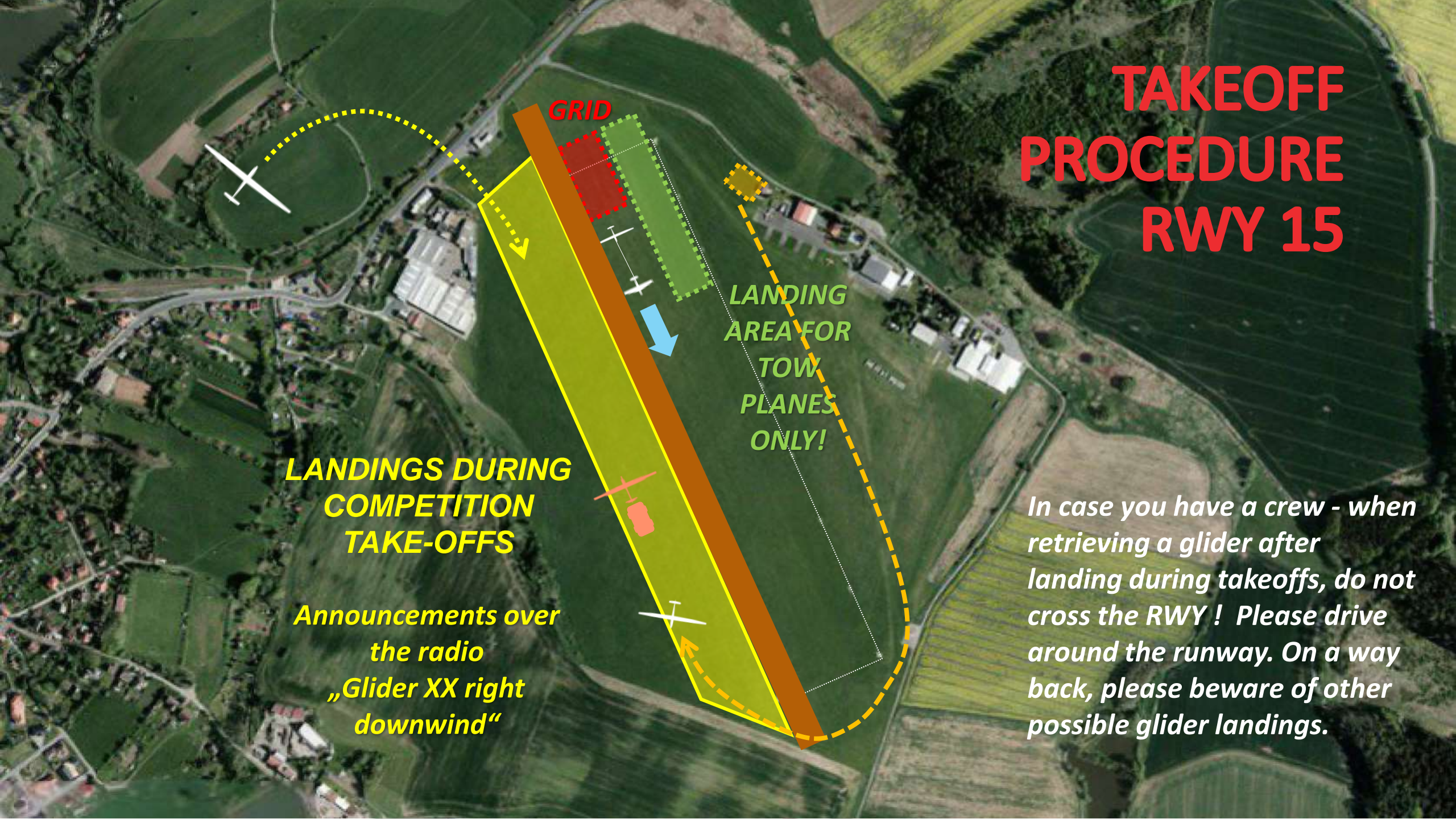
**LANDINGS DURING
COMPETITION
TAKE-OFFS**

**Announcements over
the radio
„Glider XX right
downwind“**

GRID

**LANDING
AREA FOR
TOW
PLANES
ONLY!**

*In case you have a crew - when
retrieving a glider after
landing during takeoffs, do not
cross the RWY! Please drive
around the runway. On a way
back, please beware of other
possible glider landings.*



SAFETY area RWY
Manoeuvring area
of towplanes

RWY 15

CROSSING

Landing area during
takeoffs and in case
of full RWY



TAKEOFF PROCEDURE RWY 15

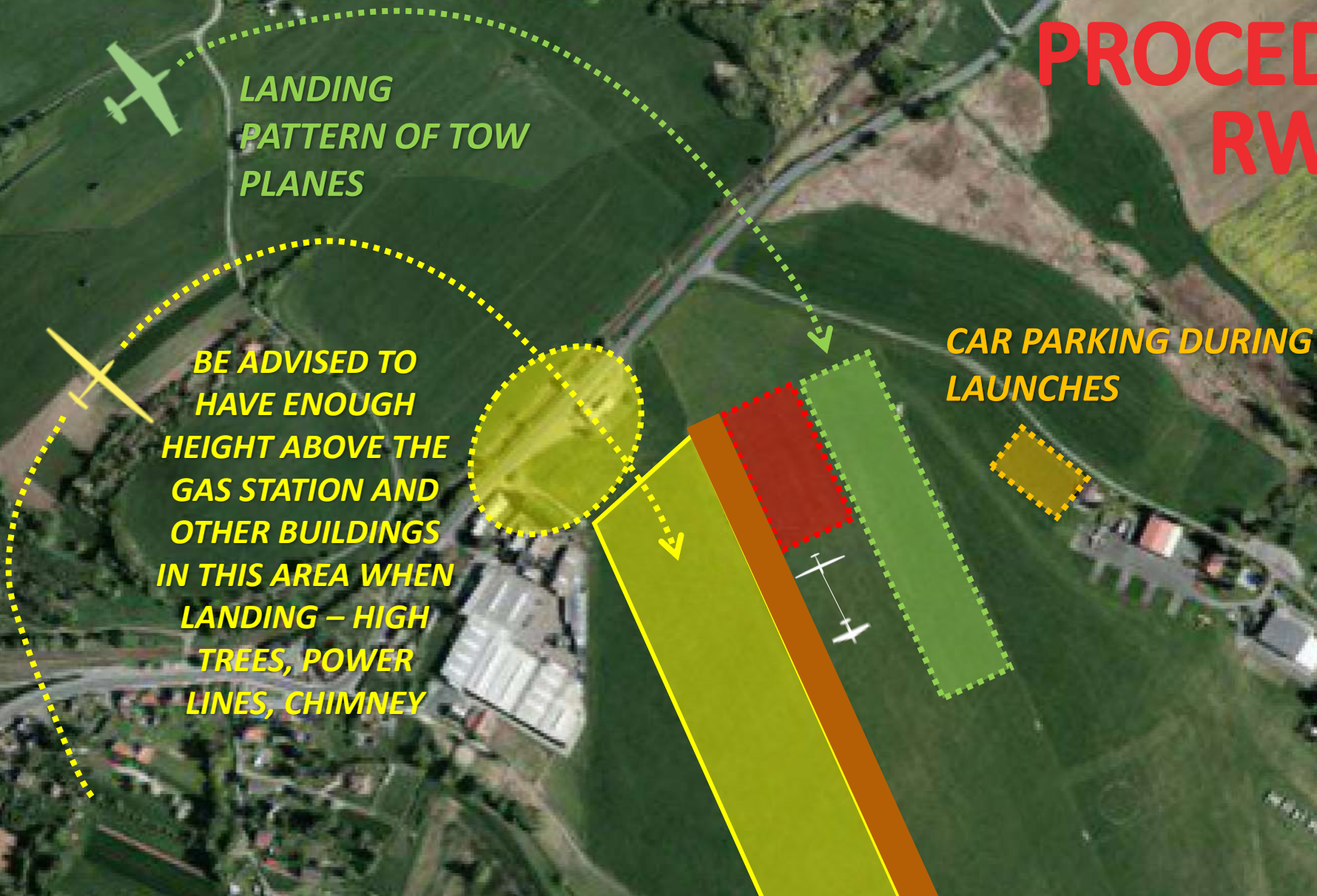


LANDING
PATTERN OF TOW
PLANES

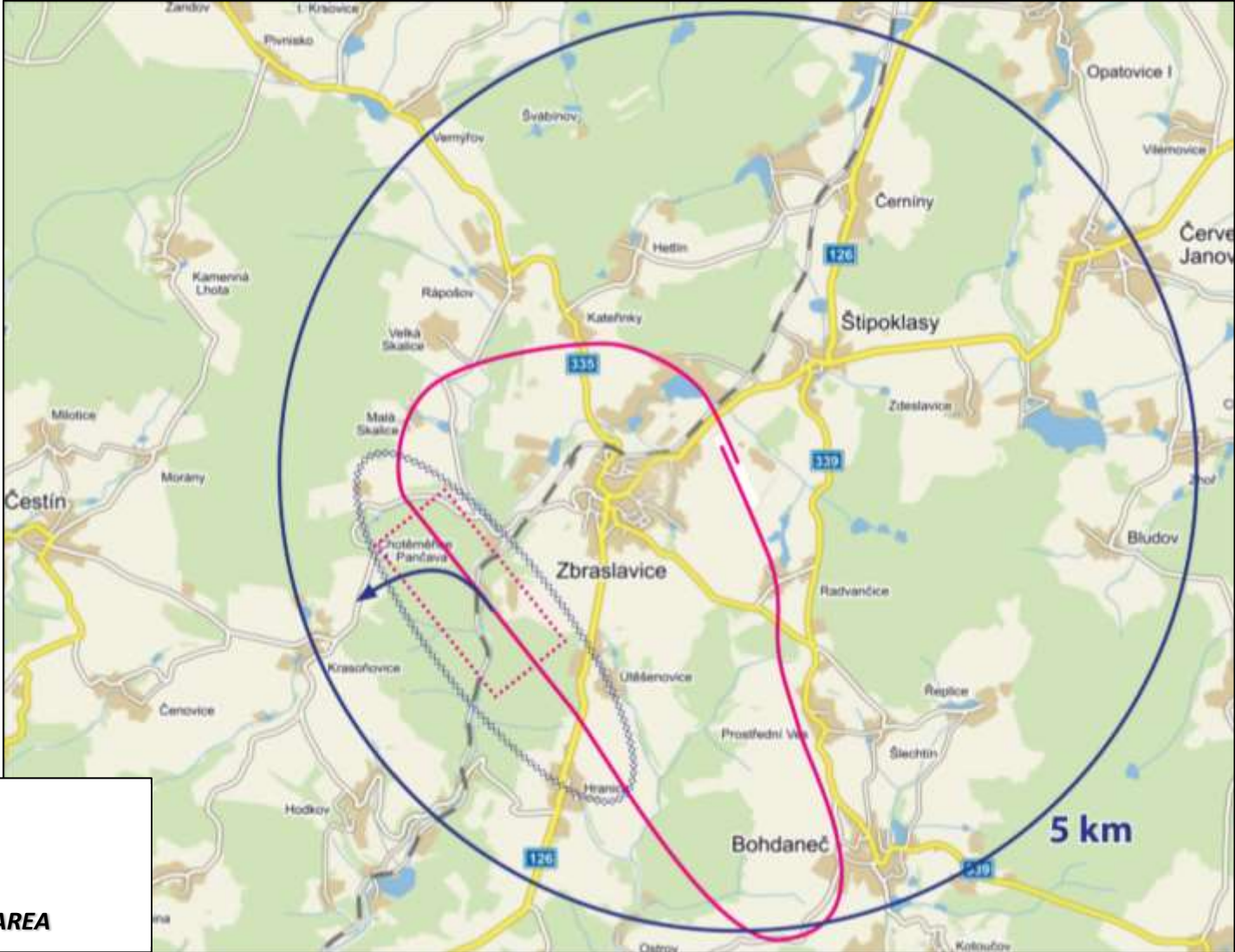






BE ADVISED TO
HAVE ENOUGH
HEIGHT ABOVE THE
GAS STATION AND
OTHER BUILDINGS
IN THIS AREA WHEN
LANDING – HIGH
TREES, POWER
LINES, CHIMNEY

CAR PARKING DURING
LAUNCHES



TAKEOFF PROCEDURE RWY 15



-  **TOWING**
-  **RELEASE ZONE**
-  **NO CIRCLING BELOW 1200 m MSL**
-  **ENGINE SHUT OFF AREA/ENGINE CHECK AREA**

TAKEOFF PROCEDURES RWY 15

- RELEASE height is 700 m AGL (approx. 1200 m MSL)
- Tow plane will rock the wings at the release height as a sign to release.
- After release, the tow plane will continue straight ahead to make sure you have released safely and then descend.
- Turn LEFT and leave the release zone. No circling below 1200 m MSL.
- Motor gliders may continue directly after releasing to test engine/MOP in the engine check area.

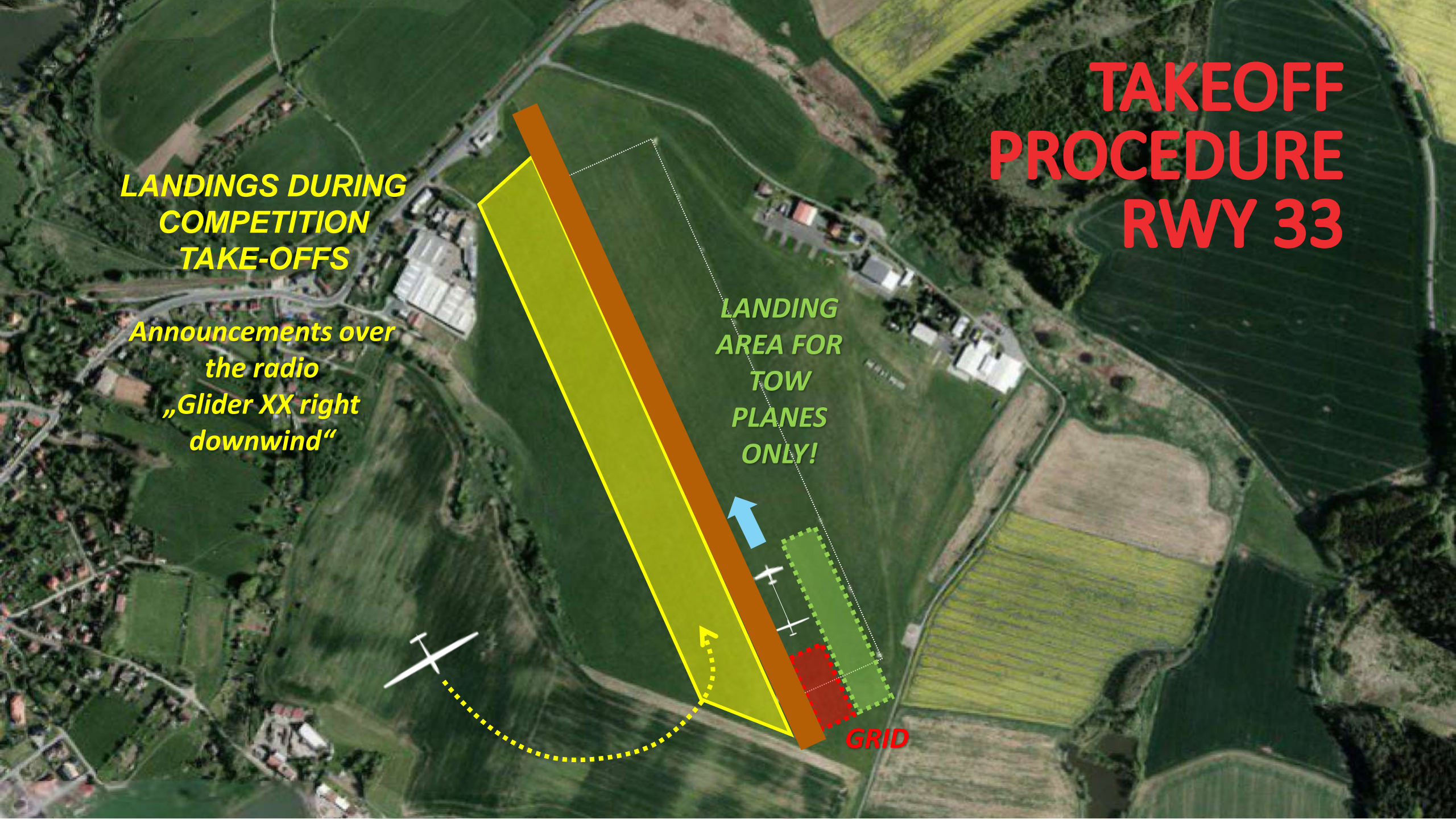
TAKEOFF PROCEDURE RWY 33

**LANDINGS DURING
COMPETITION
TAKE-OFFS**

*Announcements over
the radio
„Glider XX right
downwind“*

**LANDING
AREA FOR
TOW
PLANES
ONLY!**

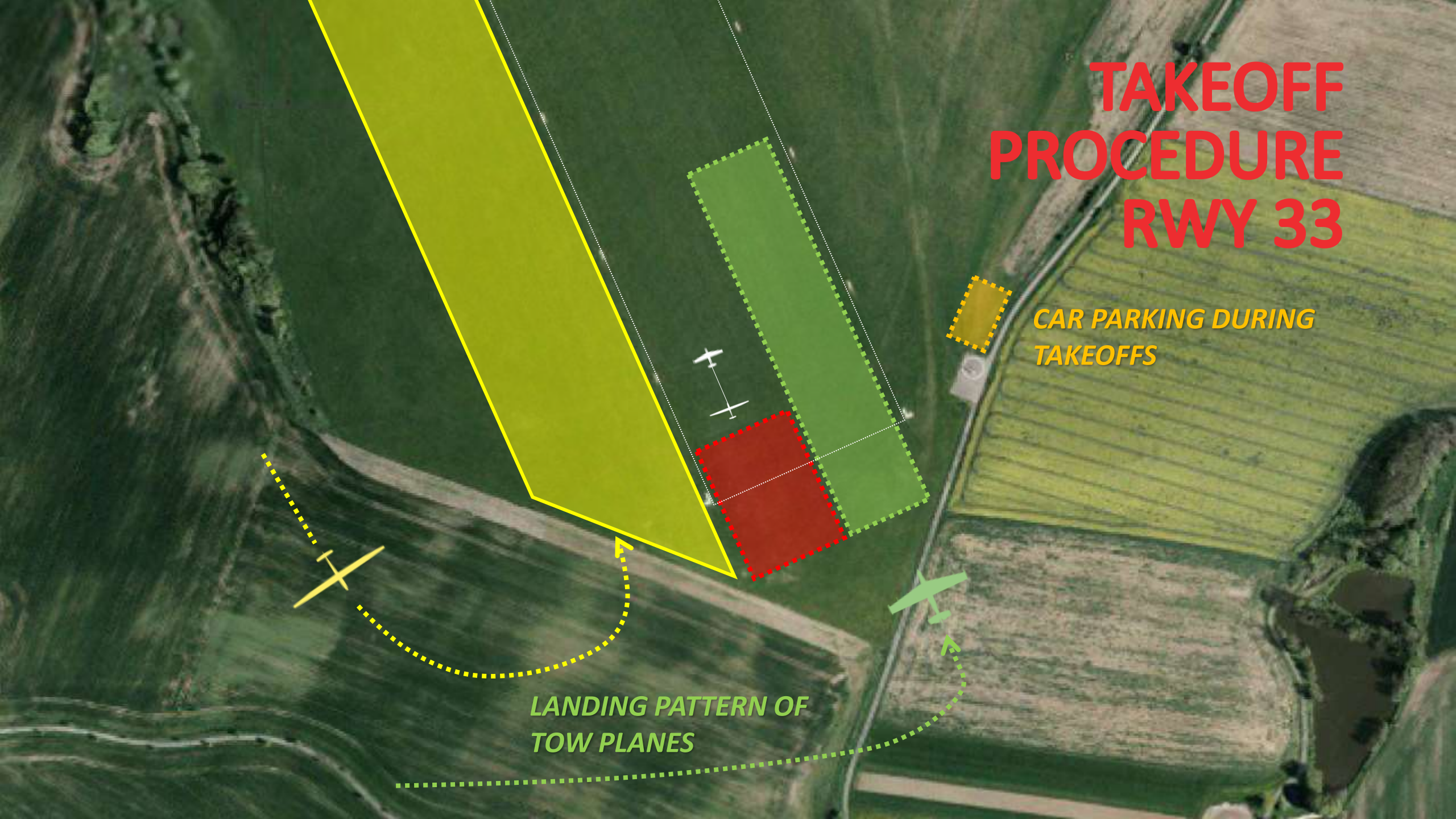
GRID



TAKEOFF PROCEDURE RWY 33

*CAR PARKING DURING
TAKEOFFS*

*LANDING PATTERN OF
TOW PLANES*

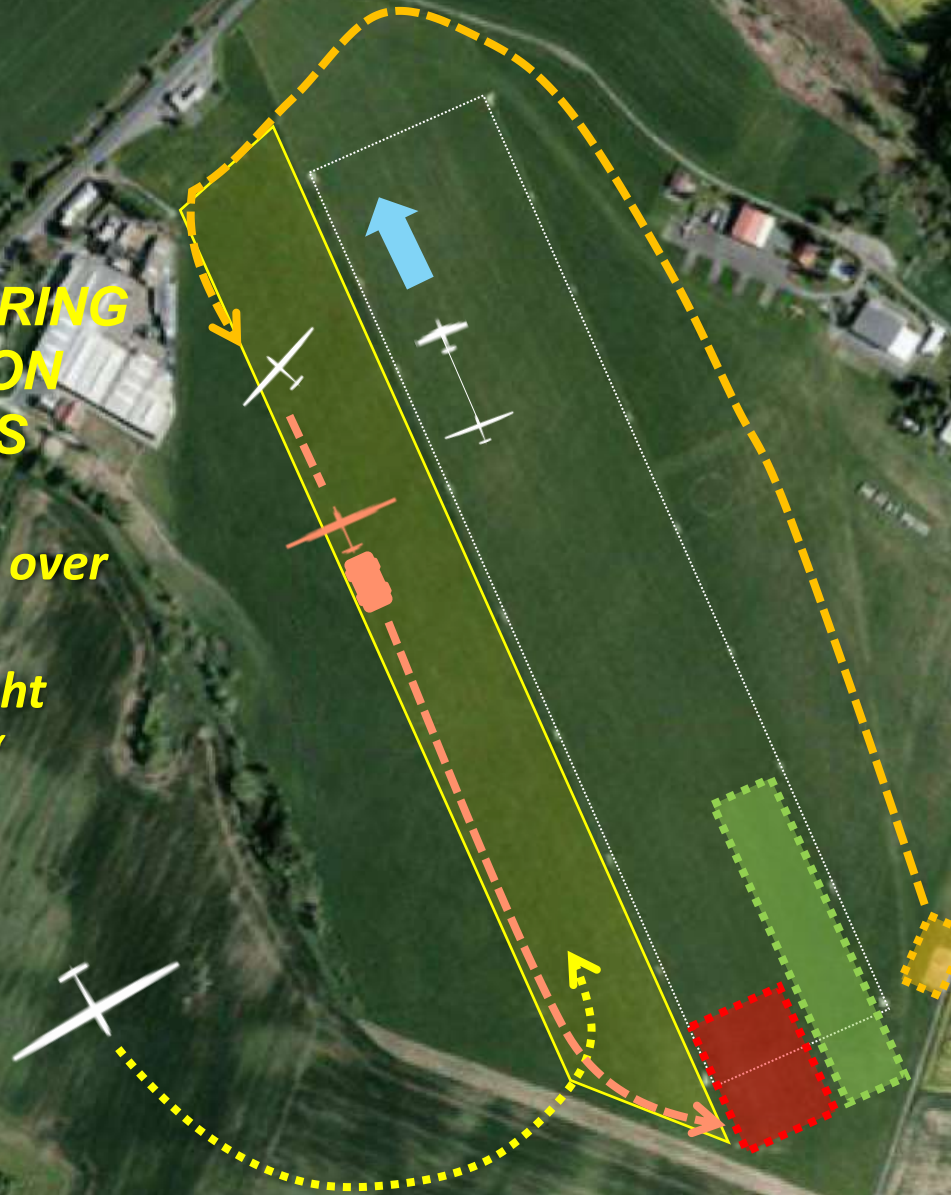


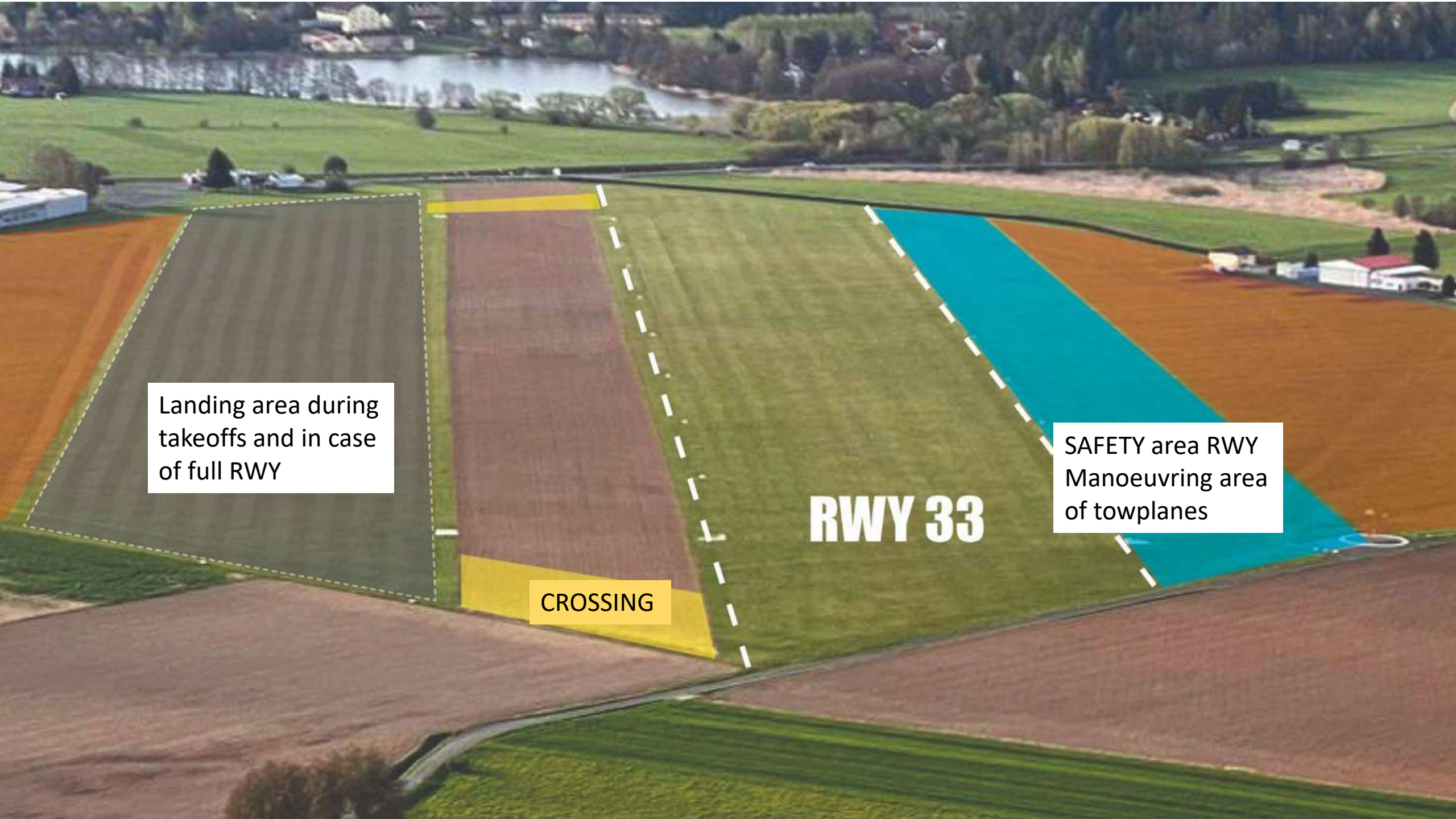
TAKEOFF PROCEDURE RWY 33

**LANDINGS DURING
COMPETITION
TAKE-OFFS**

**Announcements over
the radio
„Glider XX right
downwind“**

*In case you have a crew - when
retrieving a glider after
landing during launches, do not
cross the RWY ! Please drive
around the runway. On a way
back, please beware of other
possible glider landings.*





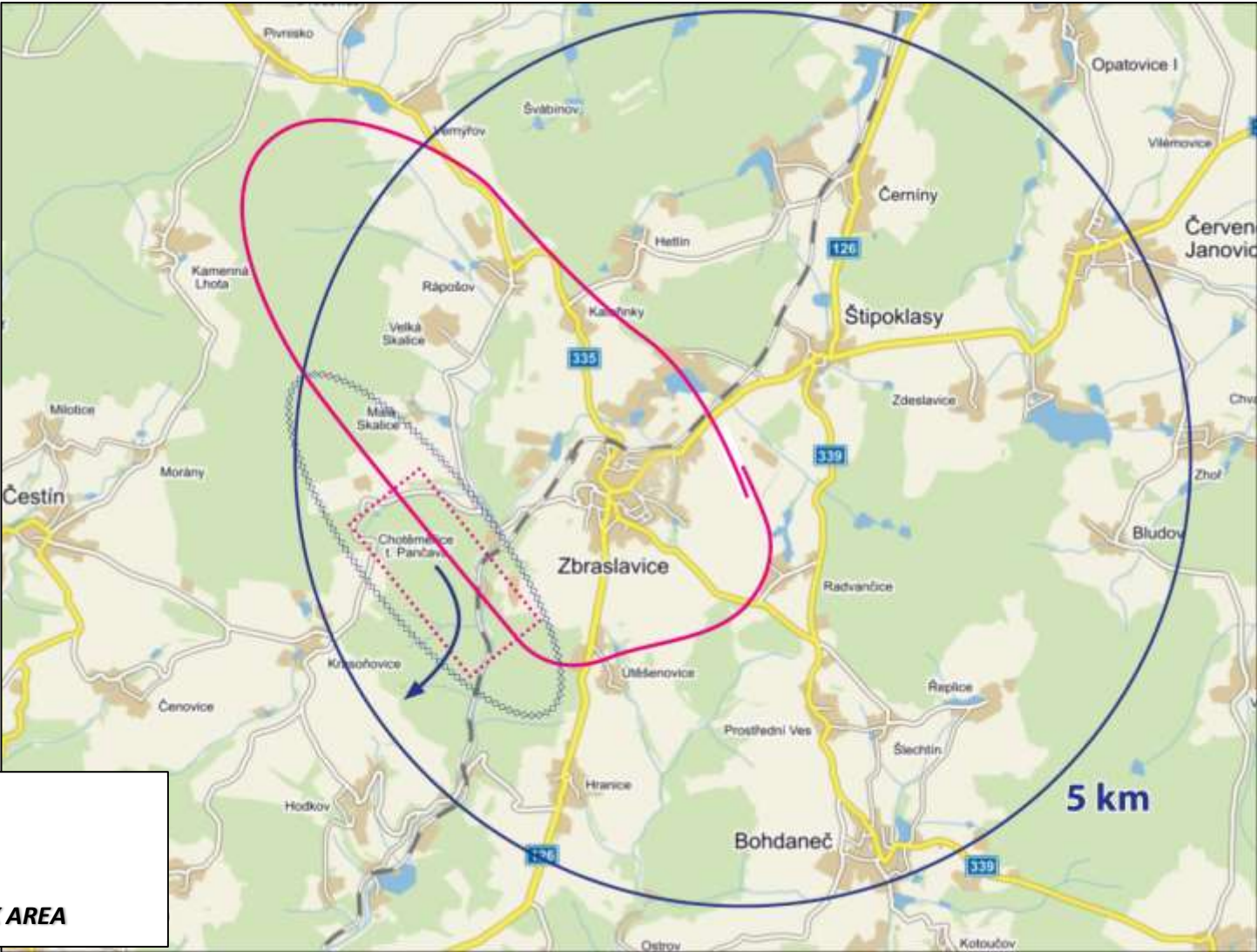
Landing area during takeoffs and in case of full RWY





CROSSING

RWY 33

SAFETY area RWY
Manoeuvring area of towplanes

TAKEOFF PROCEDURE RWY 33



-  **TOWING**
-  **RELEASE ZONE**
-  **NO CIRCLING BELOW 1200 m MSL**
-  **ENGINE SHUT OFF AREA/ENGINE CHECK AREA**

RELEASE PROCEDURES RWY 33

- RELEASE height is 700 m AGL (approx. 1200 m MSL)
- Tow plane will rock the wings at the release height as a sign to release.
- After release, the tow plane will continue straight ahead to make sure you have released safely and then descend.
- Turn RIGHT and leave the release zone. No circling below 1200 m MSL.
- Motor gliders may continue directly after releasing to test ENGINE/MOP in the engine check area.

EMERGENCY LANDINGS



***FIELDS SUITABLE FOR LANDINGS
IN CASE OF AN EMERGENCY
DURING A AEROTOW***



FINISHING PROCEDURES

ZBRASLAVICE RADIO frequency 126,630 MHz

„(Competition number), (distance to finish line in km), (direct landing/speed finish)“

- Announcing finish at 10 km to final (and 5 km to final when incase of traffic)
- Minimum altitude at the finish ring 600m MSL
- No pull-ups after crossing the finish ring
- Avoid dangerous manoeuvres

FINISH RING

Min. altitude
600 m AMSL



LANDING PROCEDURES

No turns – straight roll out until stop (small turns possible only at the end of the runway when arriving among the first)

Long landings to save space for other gliders behind!

Once landed, you should immediately pick up your glider and transport him away from the runway.

Do not cross the runway during landings!

When needed, it is possible to use strip as shown on the next map.

LANDING PROCEDURES

**IN CASE OF BIG TRAFFIC AT ONCE,
IT IS POSSIBLE TO USE THIS STRIP
FOR LANDING**

**RWY 33 Announcements over the radio:
„Glider XX left strip final“**

**RWY 15 Announcements over the radio:
„Glider XX right strip final“**

RWY
15

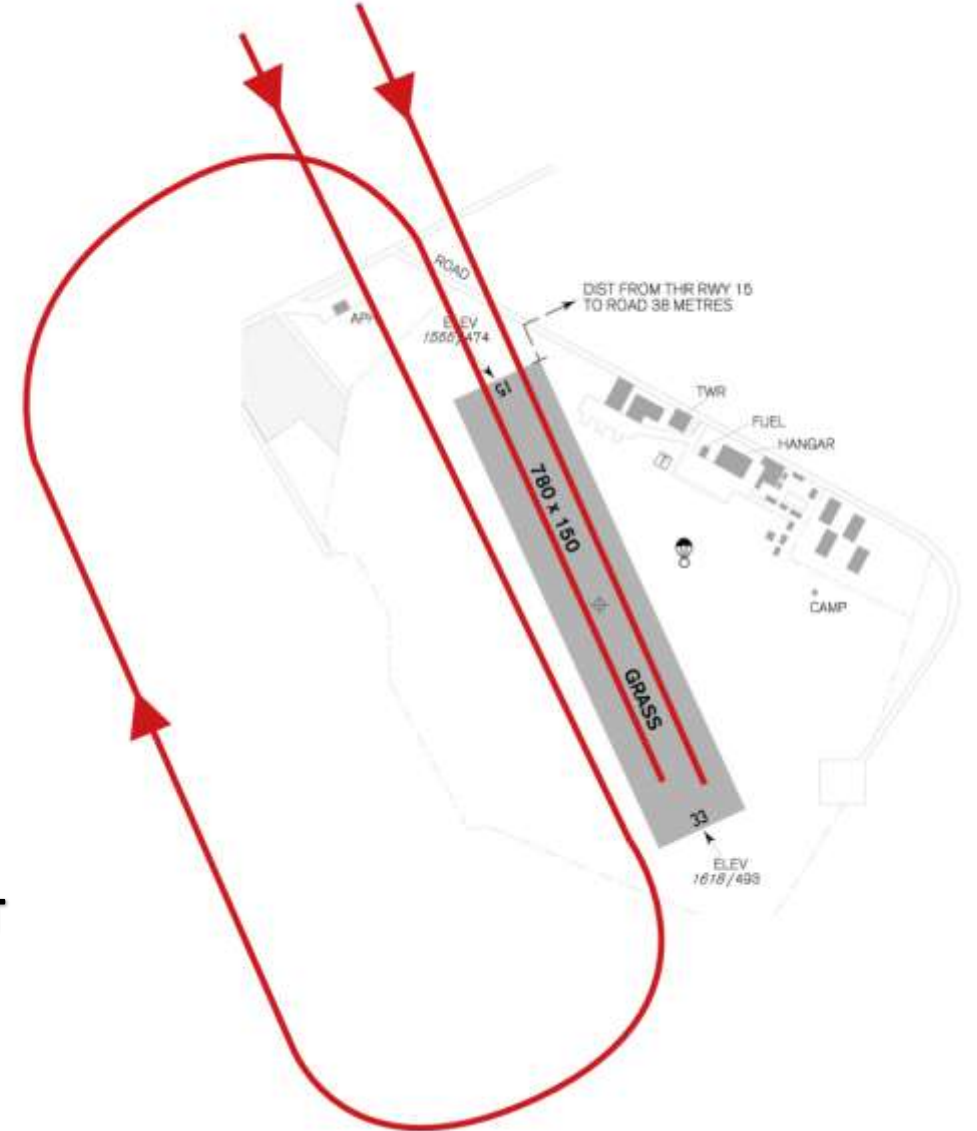
RWY
33

**PROHIBITED AREA FOR
LANDINGS**

LANDING PROCEDURES RWY 15

DIRECT LANDING or SPEED FINISH (lining up to the air traffic pattern)

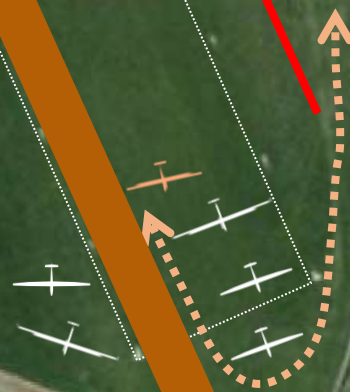
AIR TRAFFIC PATTERN FOR GLIDERS RWY 15 - RIGHT



LANDING PROCEDURES RWY 15

DIRECTION OF LANDINGS

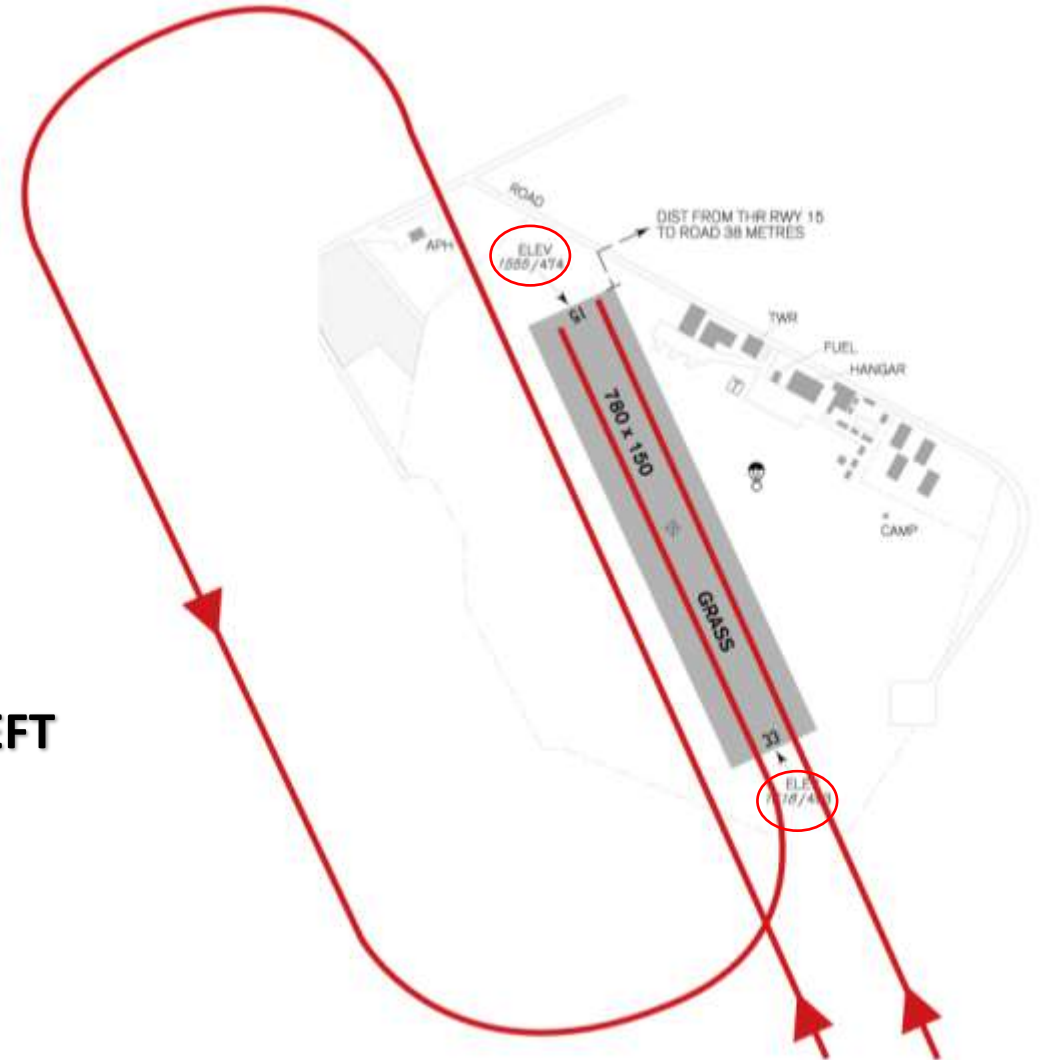
**WHEN PICKING UP YOUR
GLIDER, PLEASE DO NOT
ENTER THE RUNWAY!**



LANDING PROCEDURES RWY 33

DIRECT LANDING or SPEED FINISH (lining up to the air traffic pattern)

AIR TRAFFIC PATTERN FOR GLIDERS RWY 33 - LEFT



LANDING PROCEDURES RWY 33

**WHEN PICKING UP YOUR
GLIDER, PLEASE DO NOT
ENTER THE RUNWAY!**

DIRECTION OF LANDINGS





SharkCup LKZB 2023

WhatsApp group



Scan or upload this QR code using the WhatsApp camera to join this group



ENJOY THE SHARKCUP MEETING!

